

Weather

The **Weather** feature of Advantage Acre utilizes **WeatherTrends360** to give the user accurate, long term forecasts to better anticipate the impact of weather on production plans optimizing productivity.

Weather Access

The **Weather** button is located at the far right of the black menu bar after a **Field** has been selected. The user can access a **Weather Overview**, **11-Month Trend**, and a **4-Week Weather Forecast**. Weather information can be found on the left-hand side of the screen once a field has been chosen.



Figure 1: Weather is visible at the top left after a Field is selected and the Weather button clicked (in red)

Weather Overview

1. Provides summaries for Precipitation, Average Temperature, and GDU's over the last 14 days, last 60 days, since January 1, Last 12 months, and a Customer Range. (Rainfall for last 7 days, next 7 days)
2. Data for Actual, Average (last 30 years), and a selected Comparison is available. **Green** indicates Actual data higher than the 30-year Average and **red** means lower than the 30-year Average.
3. The Comparison Year may be selected to reflect recent previous years of historical weather data. (Back 4 years)



Figure 2: The Weather Overview menu and Comparison Year are indicated in red

11-month Weather Trend

The user can view Precipitation, Average Temperature, and GDU's, by month, up to 11 months ahead, by a Forecast compared to the 30-year Average and Last Year. Several temperature ranges are provided along with the **Above** and **Below** average indicators. And Actual tracking of GDU's and Rainfall from April 1 through August 30 are listed at the top.



Figure 3: The 11-month Weather Trend is indicated in red

4-week Weather Forecast

Provides the user with Precipitation Totals, Maximum & Minimum Temperatures, and GDU Accumulation forecasts for each of the next 4 weeks, including the 4-Week Summary. (All from actual day being viewed)

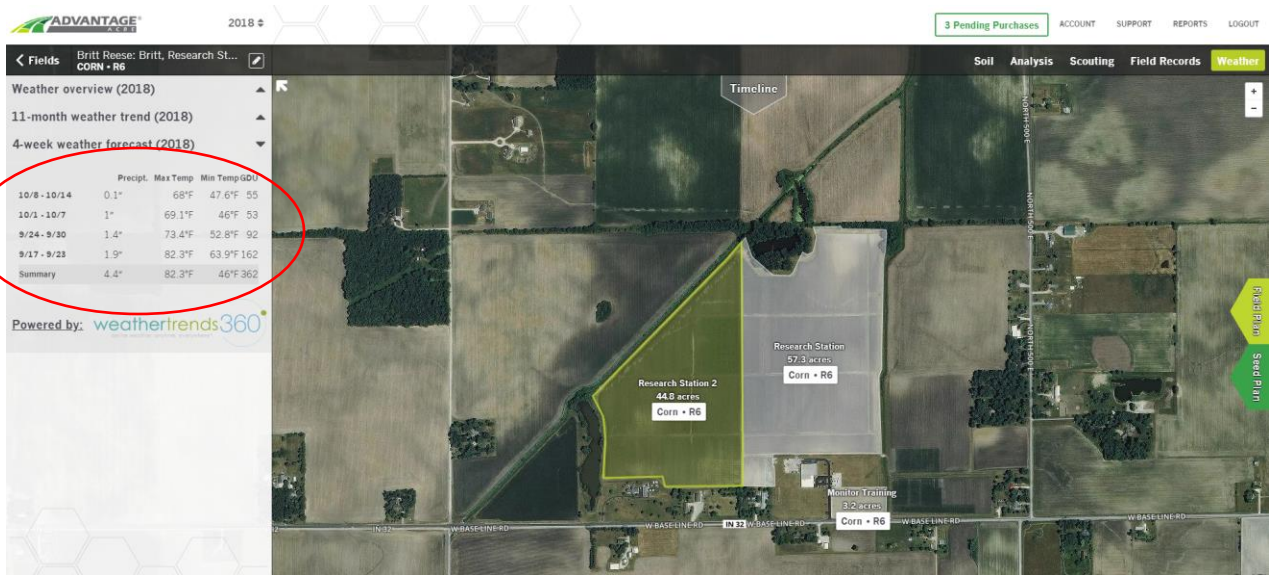


Figure 4: The 4-week Weather Forecast is indicated in red